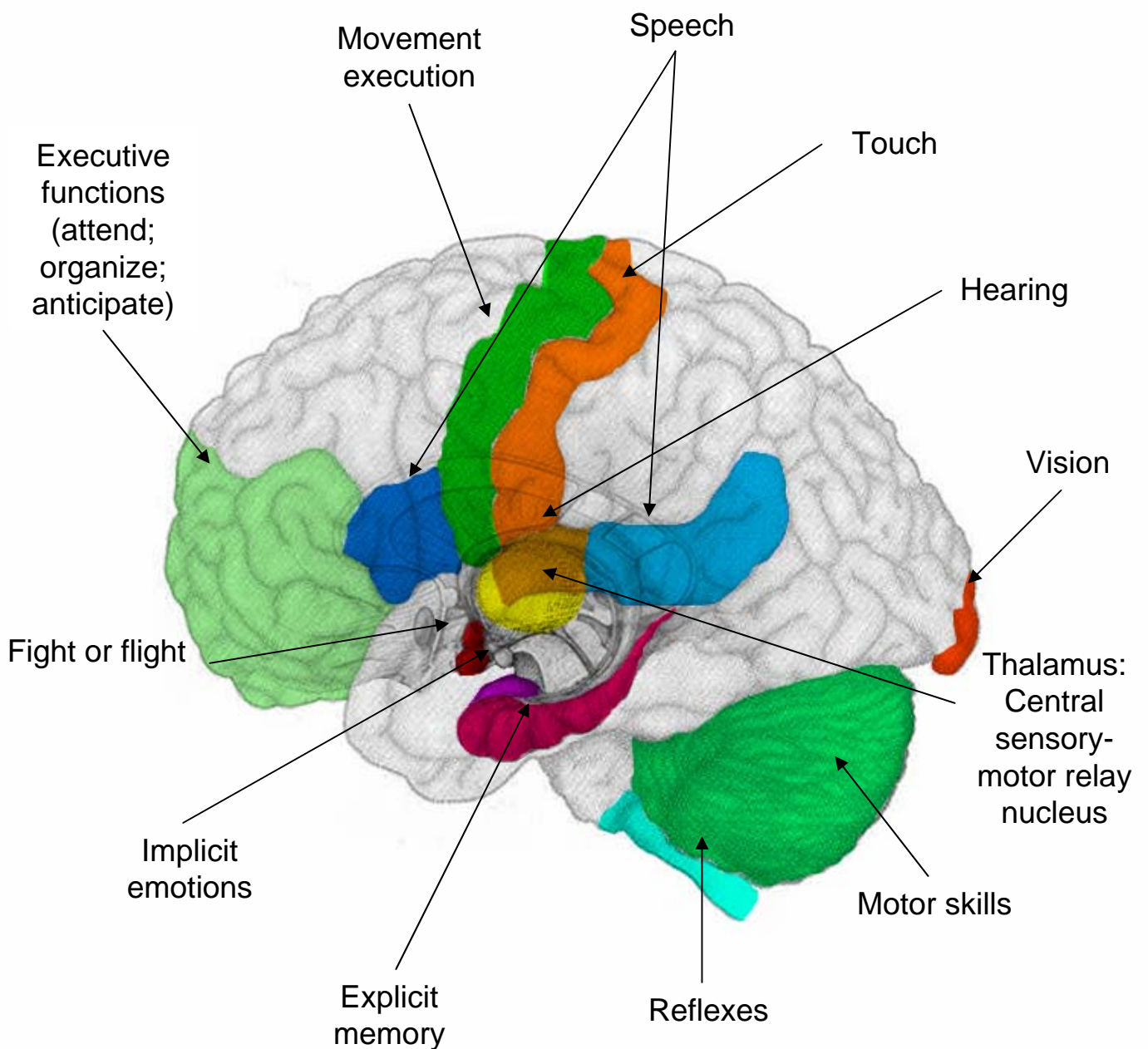


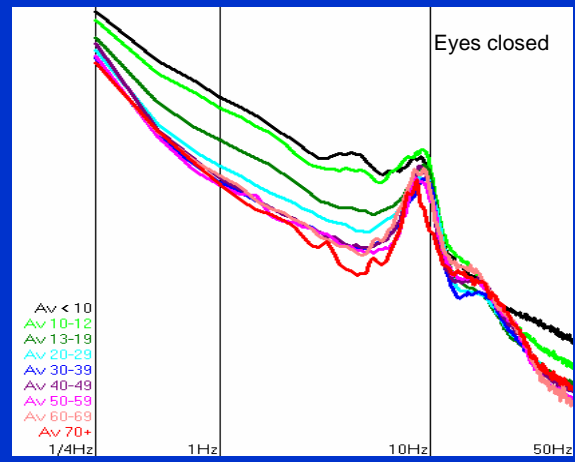
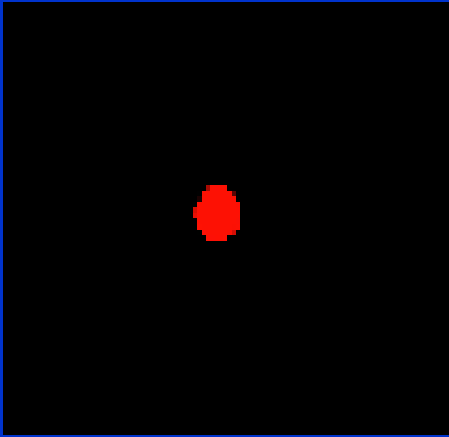
“Tapping the major networks of the brain”



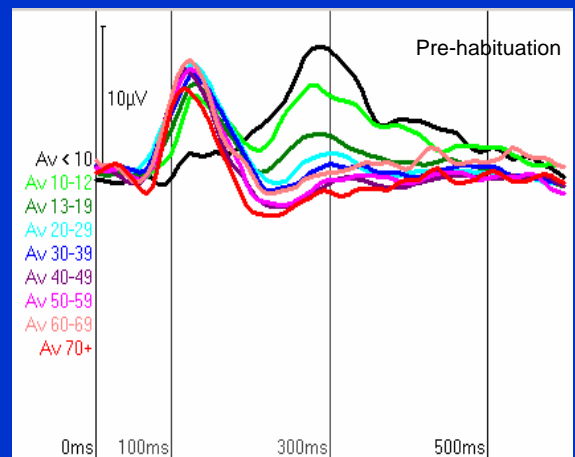
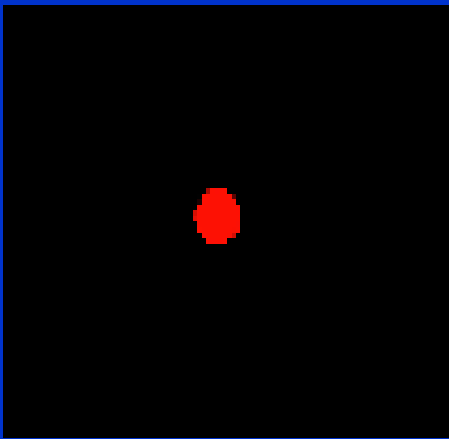
Electrical Brain Function

1,000 normals across decades

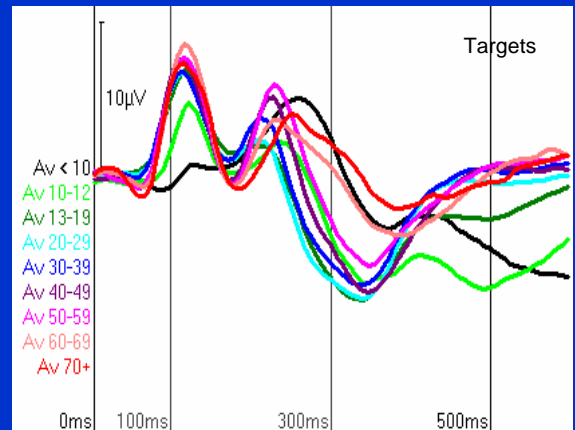
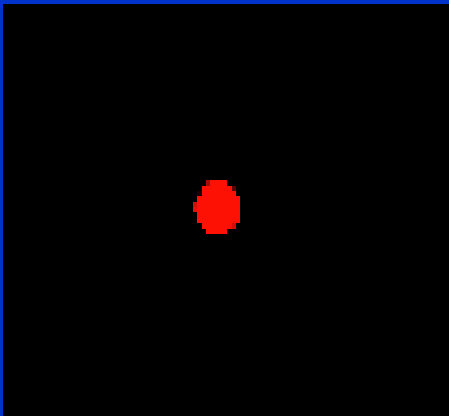
Test screen
Resting EEG



Habituation

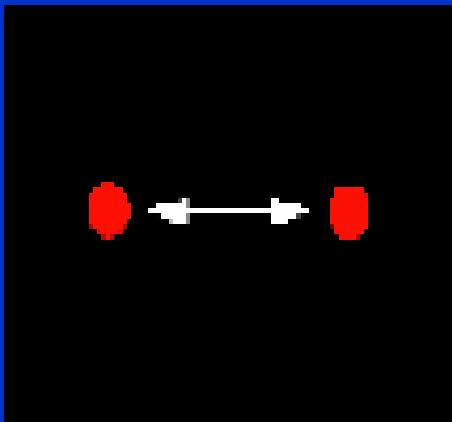


Auditory Oddball

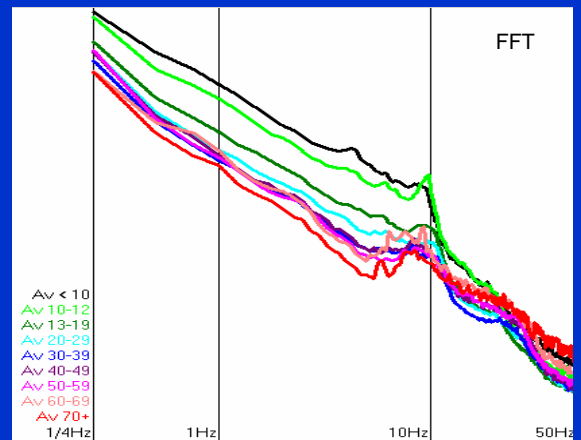


Electrical Brain Function

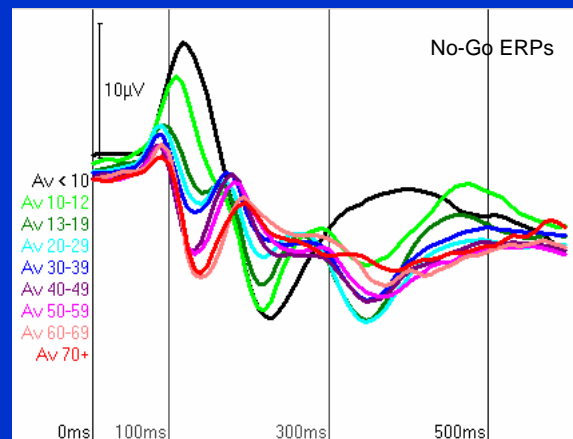
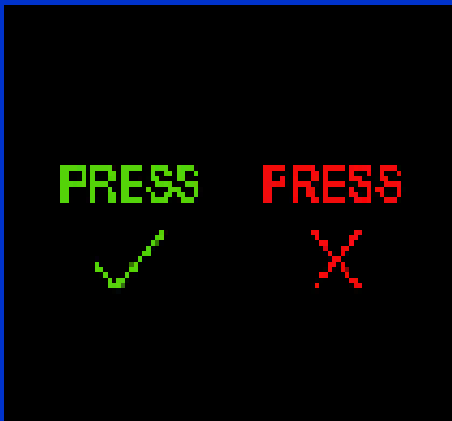
Test screen
Visual Tracking



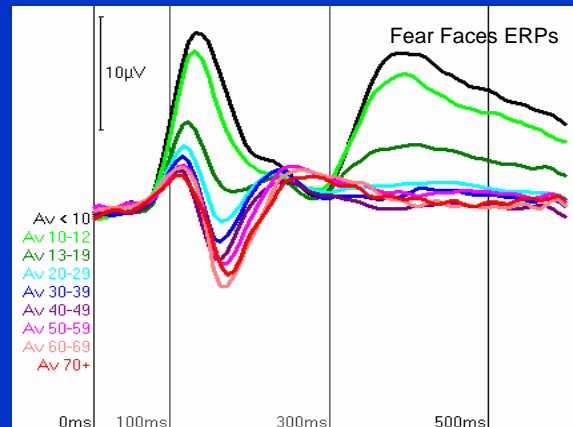
1,000 normals across decades



Go-NoGo



Conscious and subconscious
processing of facial emotions



Brain Resource International Database

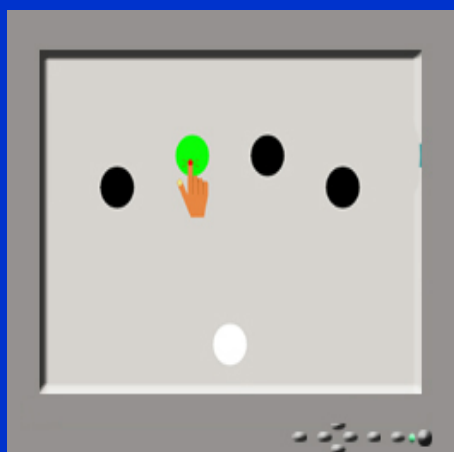
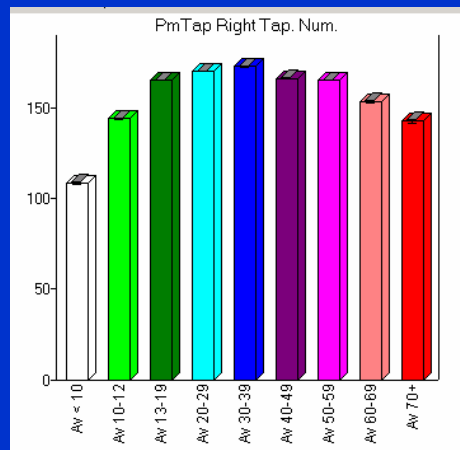
INTEG NEURO Cognitive Test Battery

Test screen

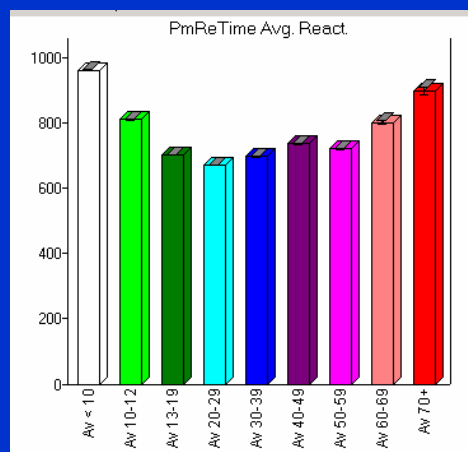
Pattern of results from 1,000 normals



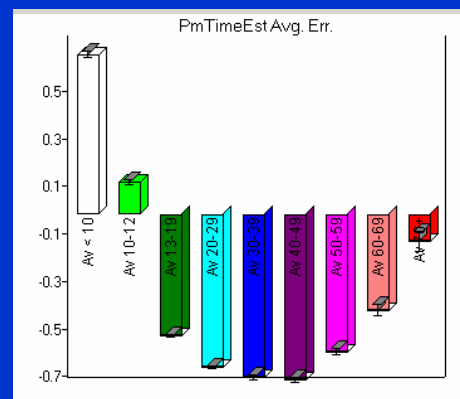
Motor tapping



Choice reaction time



Timing

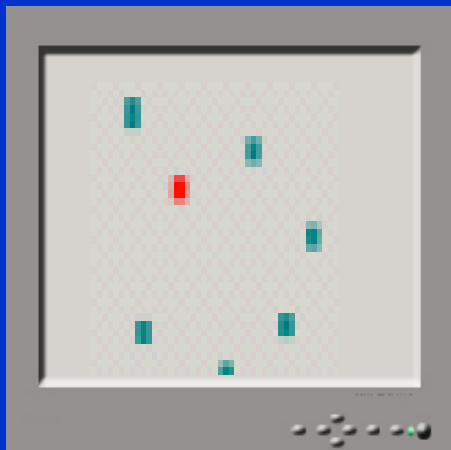
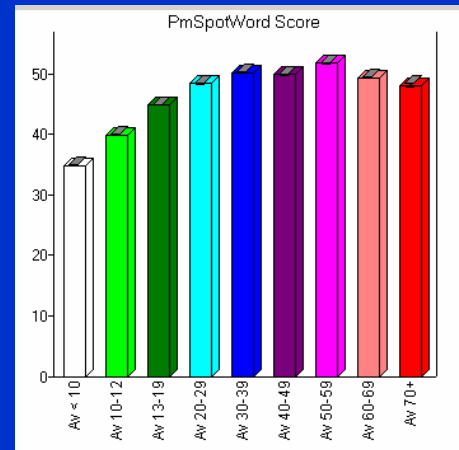


Test screen

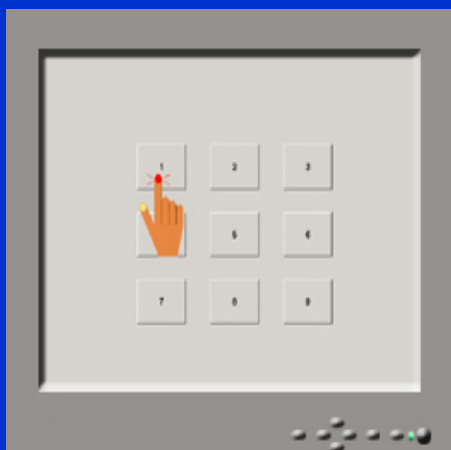
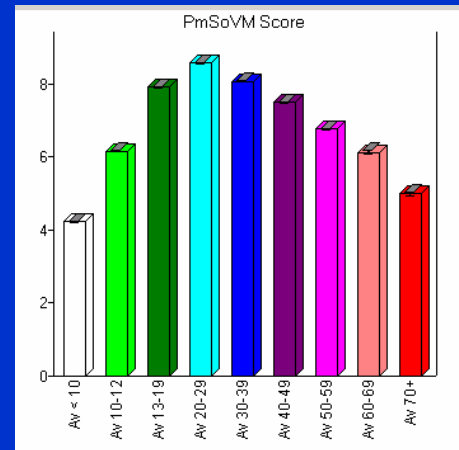


Spot the real word

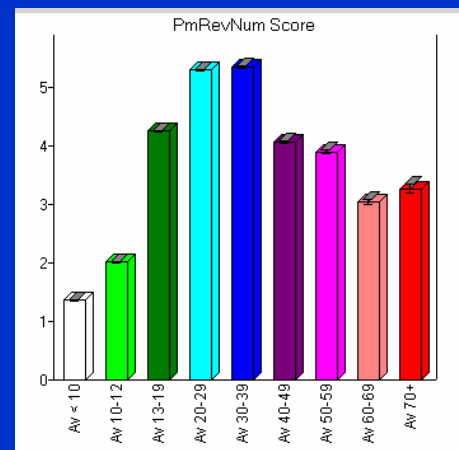
Pattern of results from 1,000 normals



Span of Visual Memory



Digit Span



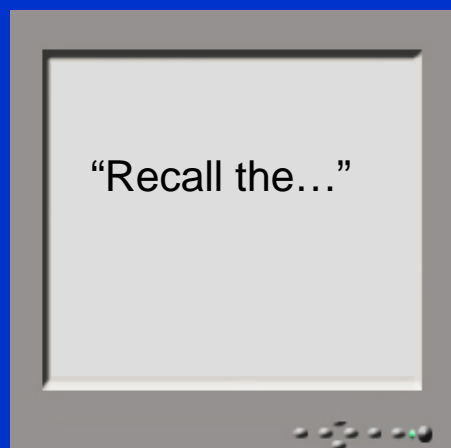
Test screen



Verbal Interference

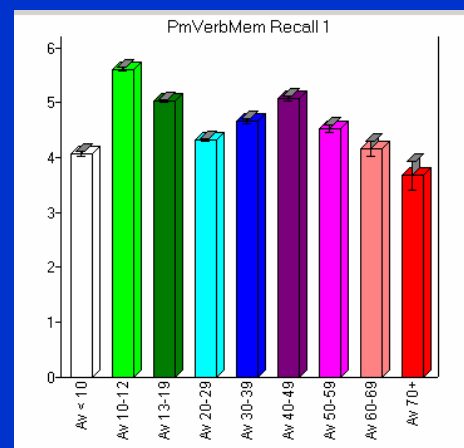
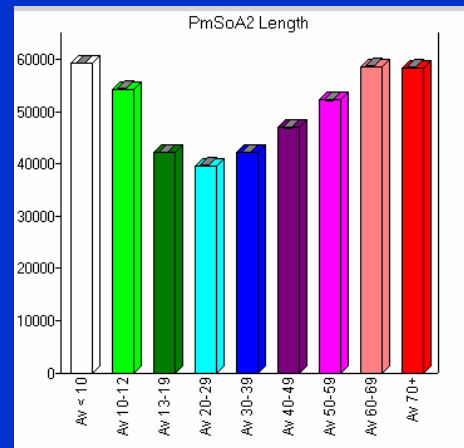
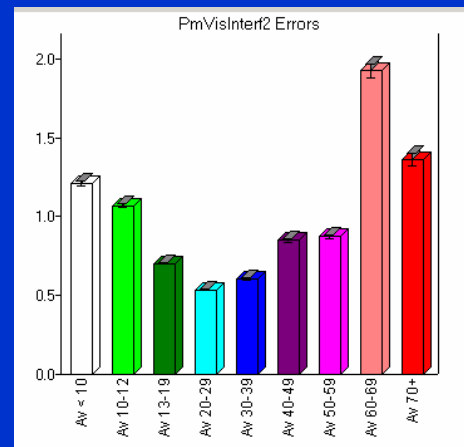


Switching of Attention

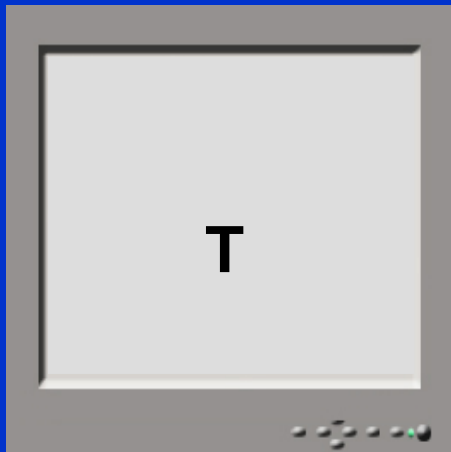


Memory Recall and Recognition

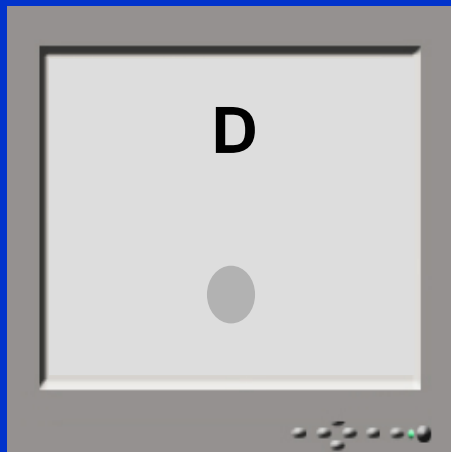
Pattern of results from 1,000 normals



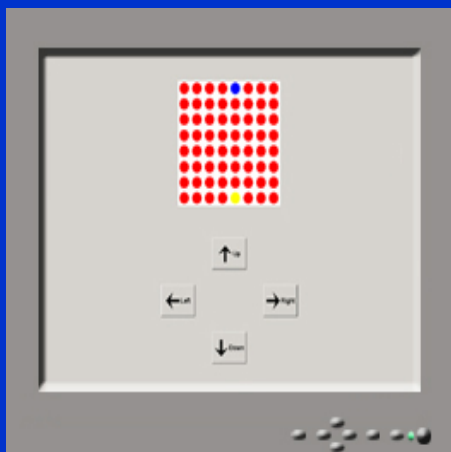
Test screen



Word Generation

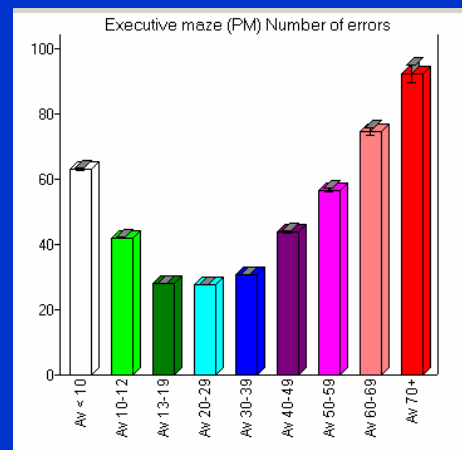
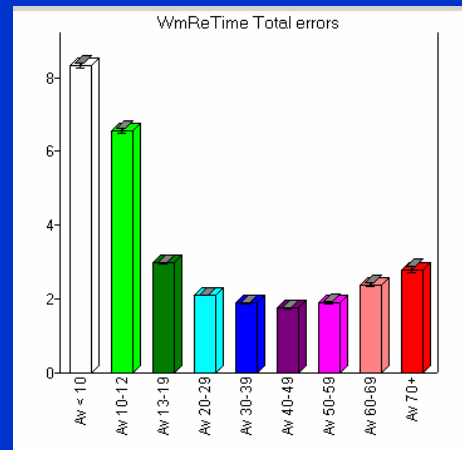
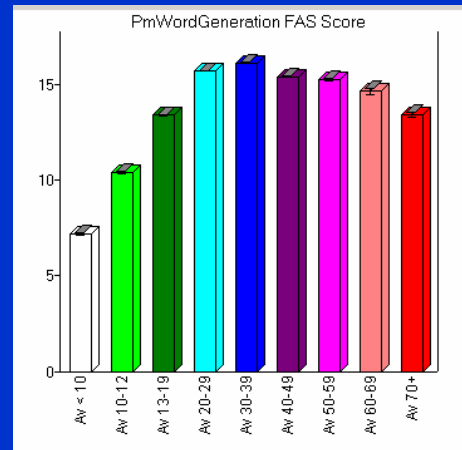


Visual Working Memory



Executive Maze

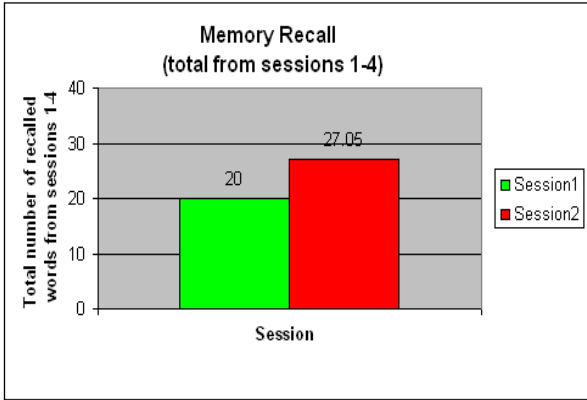
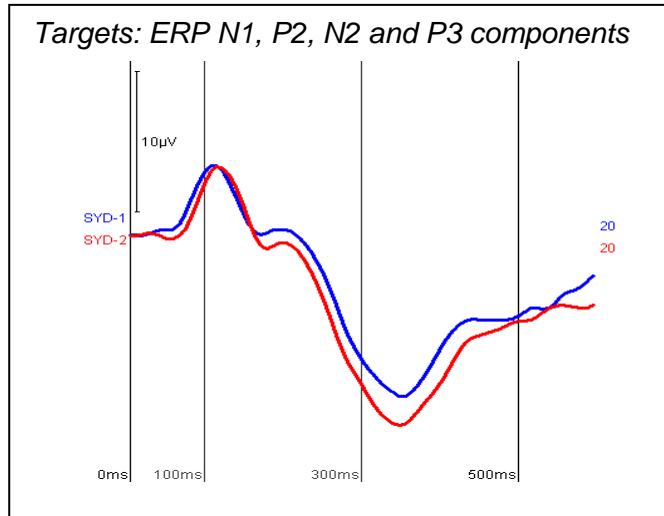
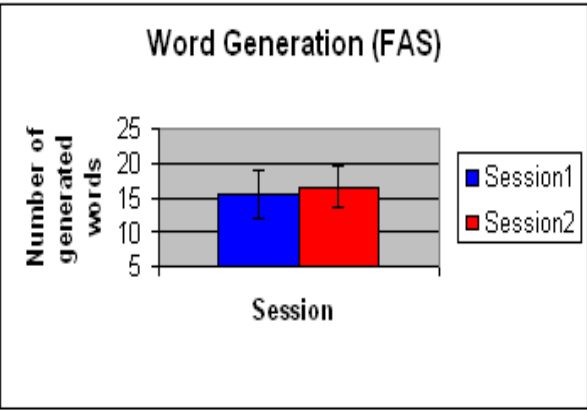
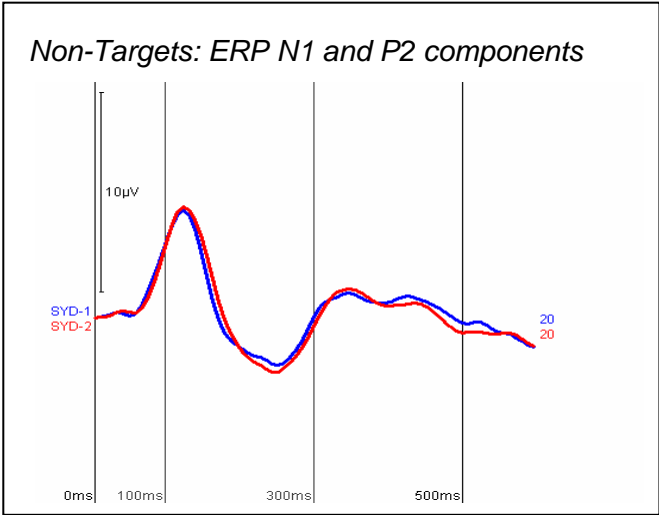
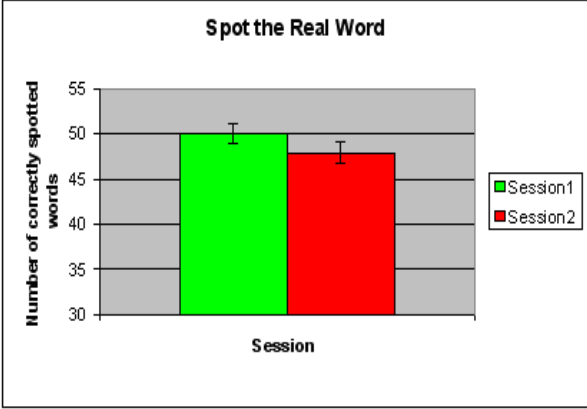
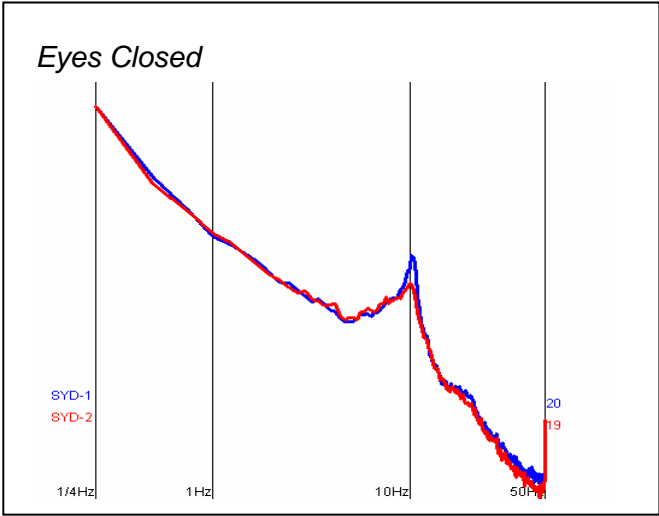
Pattern of results from 1,000 normals



VALIDITY

IntegNeuro test	Convergent validity measure	<45	>45
Digit Span	Digit Span – WAIS III (WAIS-III; Wechsler, 1999)	.53*	.53*
Spatial Span	Spatial Span – WMS III (Wechsler Memory Scale III; WMS-III; Wechsler, 1999)	.60*	.52*
Finger tapping dominant	Finger Tapping Test	.55*	.55*
Finger tapping nondominant	Finger Tapping Test	.60*	.60*
Memory recall on the learning trials	CVLT-R Learning Trials	.67*	.67*
Memory recall on the short delay	CVLT-R Short Delay California Verbal Learning Test-Research (CVLT-R; Delis, Kramer, Kaplan and Ober, 1987)	.61*	.81*
Memory recall on the delay trial	CVLT-R Long Delay Free Recall California Verbal Learning Test-Research (CVLT-R; Delis, Kramer, Kaplan and Ober, 1987)	.58*	.61*
Letter fluency	Controlled Oral Word Association	.77*	.77*
Animal fluency	Animal fluency	.76*	.76*
Spot the Word	WAIS III Full Scale IQ Wechsler Adult Intelligence Scale- III (Wechsler, 1999)	.33*	.74*
Switching of attention A	Trail Making Test A Trail Making (Reitan, 1958)	.53*	.53*
Switching of attention B	Trail Making Test B Trail Making (Reitan, 1958)	.65*	.65*
Mazes	Rey complex Figure Test		
Number of Correct Trials	Delay	.63*	.54*
Number of Errors	Delay	.52*	.14
Maze Time	Delay The Rey Complex Figure Test (Meyers & Meyers, 1995)	.52*	-.14
Verbal Interference	Stroop (Golden, 1978).	.09*	.67*
Choice Reaction Time	Finger Tapping Dominant	.52*	.56*
Working Memory Test	ARCPT ARCPT (Cohen 1993)	.00+	.65*

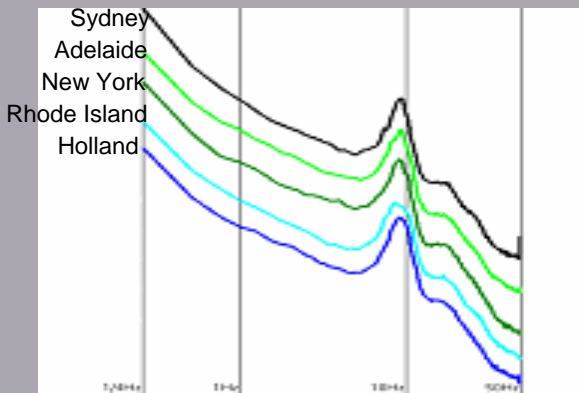
Reproducibility



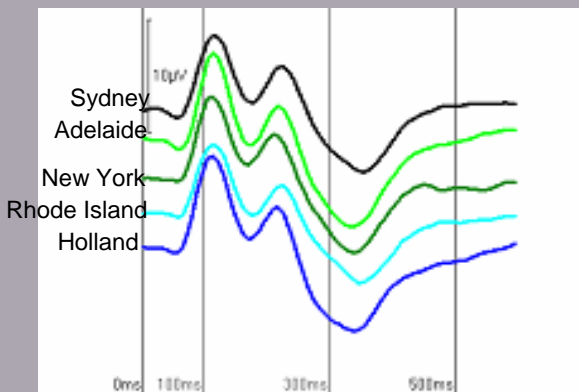
ACROSS SITE CONSISTENCY

Electrical Brain Function

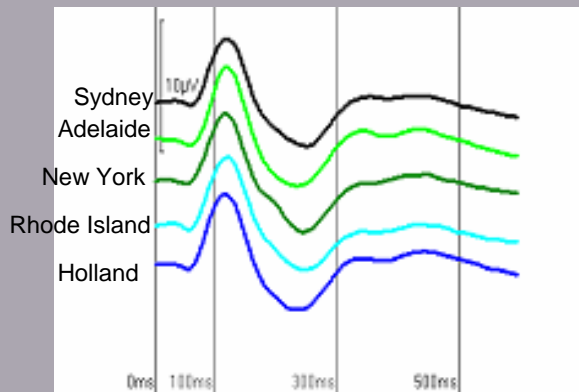
Eyes Closed EEG



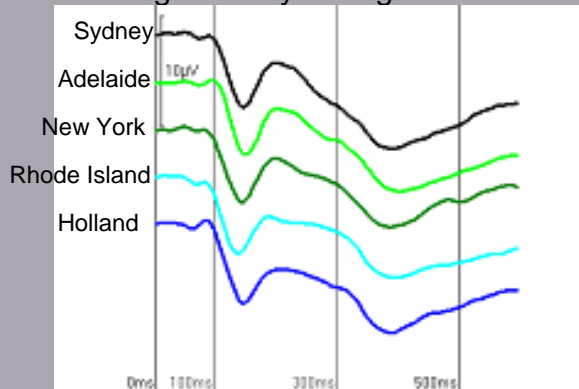
Auditory Oddball Targets



Auditory Oddball Backgrounds

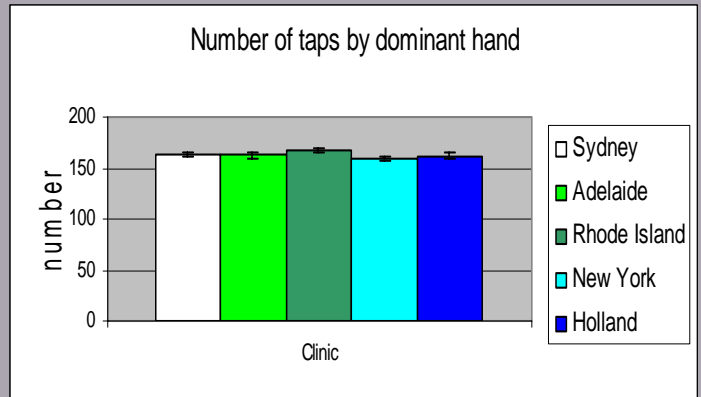


Working Memory Backgrounds

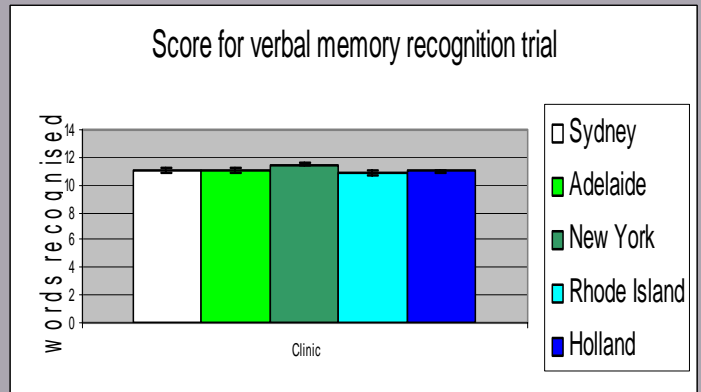


Cognition

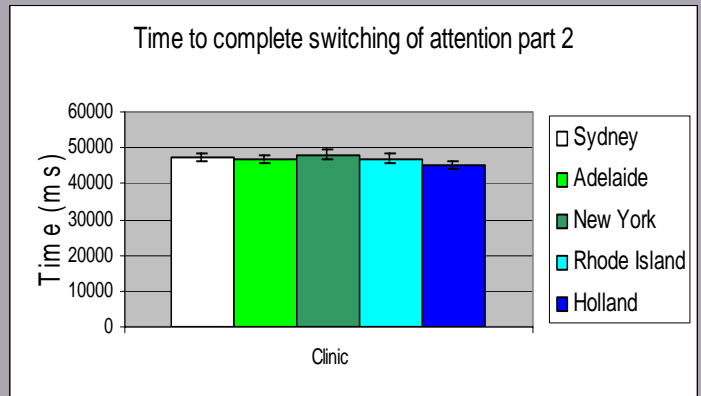
Number of taps by dominant hand



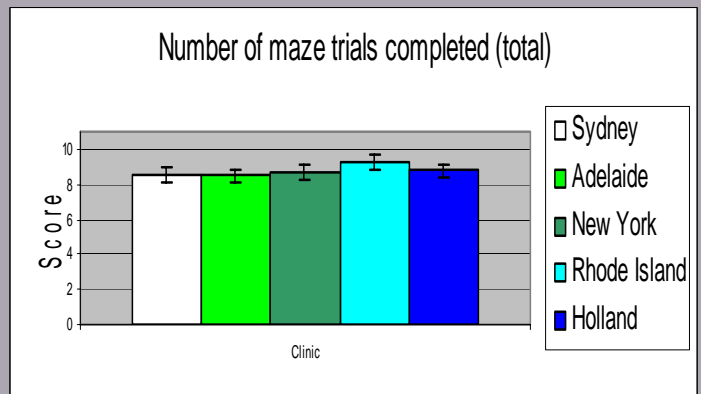
Score for verbal memory recognition trial



Time to complete switching of attention part 2



Number of maze trials completed (total)



ADHD: Brain Function - Cognition Profile

	theta	alpha	beta	P3	RT	Time	SoVM	VI	MR	SOA	WG	DS	CPT
2014	↑	↑			→			*				↓	*
2193	↑		↑	→				*		↑		↓	
2306		↑		→			↓	*			↓		
2395		→						*	↓	↑			
2418		↑								↑		↓	
2520		↑		←					↓				
2553	↑	←		→	→	↑	↓			↑		↓	*
2575				←				*			↓		
2744	↑	←↓	↑	→↓	→	↑		*	↓	↑			
2777	↑						↓		↓		↓		*
3149		↑			→		↓	*	↓	↑	↓		*
3251	↑	↑				↑							
3330	↑	↑		↑		↑		*	↓	↑	↓	↓	*
3521								*	↓		↓	↓	
3532				→					↓	↑			
3576	↑	←↑		→	→		↓	*	↓	↑		↓	
3813		↑						*		↑			*
3846	↑	↑	↑	→			↓	*		↑			*
3824											↓		*
3857	↑	↑		→				*			↓	↓	*
4061					→	↑		*		↑	↓		*
4151	↑		↑	→↓	→		↓	*		↑			*
4162	↑	↑	↑	→					↓	↑			
4409	↑			↑							↓		
4397		→	↓					*					
4465								*					*
4476		↑		↑	→				↓				
4487	↑	→↑	↑		→			*	↓			↓	*
4926		↑					↓		↓			↓	*
5163		→	↑	→	→		↓	*	↓				*
5118	↑	↑		→↓		↑	↓		↓				*
5208		↑			→		↓			↑		↓	
5400	↑	↑											
5411		↑	↑	→↓	→				↓	↑			
5422	↑	←	↓	→	→	↑	↓	*	↓			↓	
5332		←					↓	*					

Time	Time Estimation
SoVM	Span of Visual Memory
VI	Verbal Interference (Stroop)
MR	Memory Recall
SOA	Switching of Attention
WG	Word Generation
DS	Digit Span (forward or reversed)
CPT	Sustained Attention